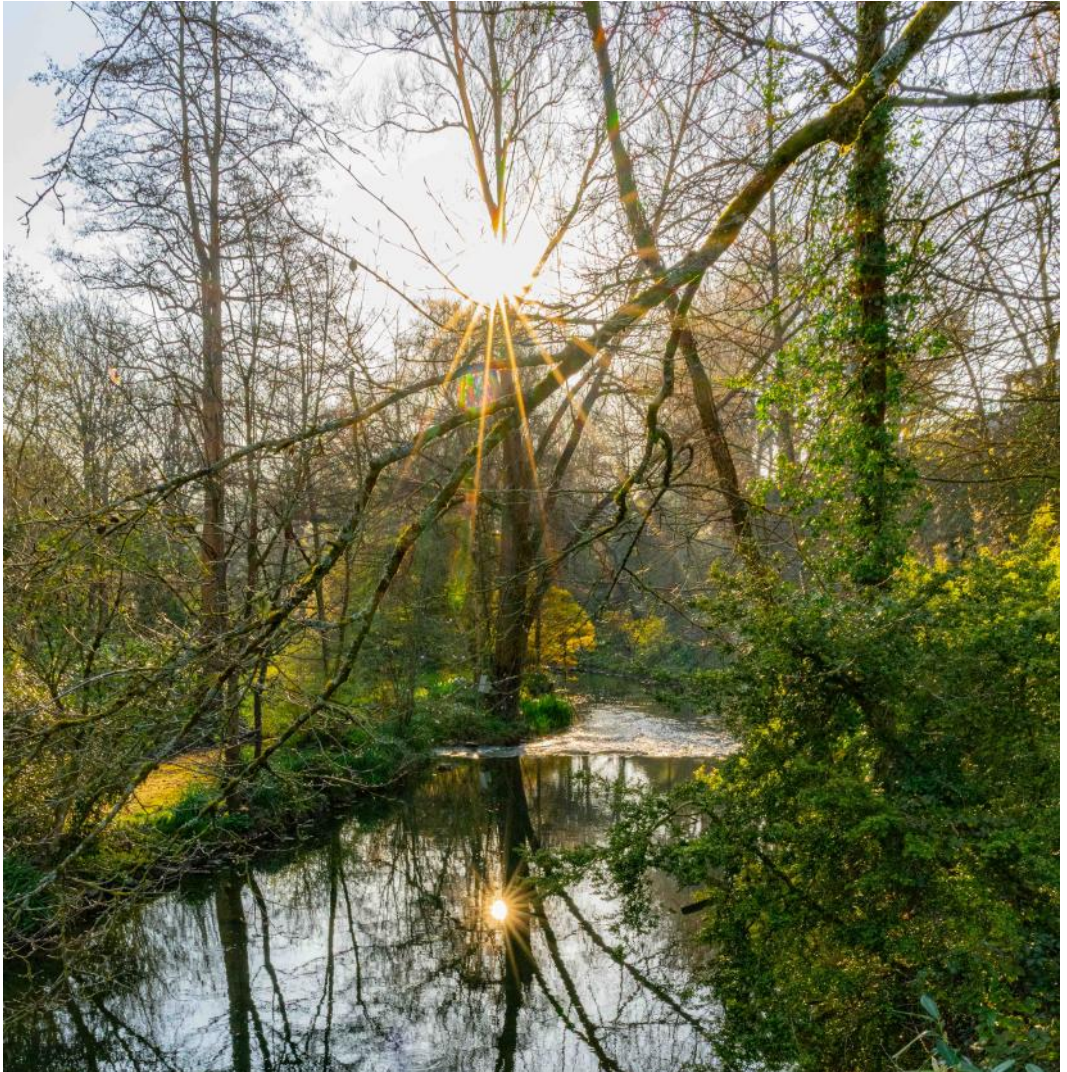


the malmesbury Jackdaw



Malmesbury's Alternative Community Magazine
23rd Edition Spring 2025



Delivered free to homes and businesses in Malmesbury

Welcome...

... to the Spring edition of The Malmesbury Jackdaw.

We hoped that we'd be able to start this edition by saying how reassuring it is to see the world finally calming down after a turbulent few years, but nothing could be further from the truth. Failing ceasefires, avaricious politicians increasingly wanting what someone else has got and the leader of one of the main players in the global economy deciding that his country will now only play with their ball in their own backyard and to hell with everybody else ... the lunatics really are running the asylum.

So, what does this mean for little old Malmesbury? The only answer we can come up with is 'who knows?' We can't influence much, but we can support each other and those less fortunate than ourselves. There are some great examples of that highlighted in this magazine. We've got an eclectic mix of subjects for you; ranging from model railway stations to an interview with our local MP. There's also the usual subtle (or not so subtle) digs at things that need sorting out.

Welcome to the new advertisers who've joined us and those who've continued to support us, we're very grateful to you and hope that your businesses prosper. This is the edition where our wonderful band of volunteer deliverers don't know whether to take sun cream or hot drinks (or both) on their rounds; such is the nature of our weather. Whatever they decide, we thank them for

Cost of Living Support

Council Tax Reductions

Most people are aware that single people are entitled to a 25% council tax reduction. What is less well known is that single people and couples might also get reductions or even exemptions for other reasons. For example, if you or your partner is in full-time education or suffering from a severe mental impairment (like dementia). You might also be entitled if you have a live-in carer, or one or both of you are in a retirement or care home. Households on low income can also qualify.

For a more complete explanation go to the Citizens Advice website www.citizensadvice.org.uk and type into the search field "check if you can pay less council tax". Alternatively, you can call them on 0808 278 7995 (lines are open Monday to Friday, 9am-4pm) for free confidential advice.

their help as we'd be lost without them.

Finally, we hope you have a good summer – despite all the price rises. There will be plenty going on in Malmesbury that doesn't cost the earth, so get out there and enjoy it!

Best wishes.

Richard, Raphe and Andy

The Malmesbury Jackdaw Team

*Cover photo: Richard Harris Photography
Tetbury Avon below Abbey House.*

Contact & Information

We're always looking for stories to include so if you're aware of something interesting or important relating to Malmesbury then please check out the editorial policy on our website (www.themalmesburyjackdaw.com) and submit an article. If you would like to discuss any ideas you might have first then drop our editor an e-mail. To contribute contact Andy at editortmj3@gmail.com. To place an advert contact Raphe at ral43.tmj@gmail.com. For the website or distribution contact Richard at richard.harris61@icloud.com

Copyright©TheMalmesburyJackdaw, 2019

Coming To Malmesbury Soon

Planning Update

Since our last update we can report the following changes:

PL/2025/02543: Land adjacent to Filands Farm, Filands. This is on the opposite side of the B4014 from the large housing development. The applicant is seeking permission in principle to build up to four houses.

PL/2025/02257: Filands Phase 4. Land to the North of Whychurch Farm and West of Crudwell Road. We reported on this in our last edition and a planning application has now been submitted. It is for up to 149 dwellings, rather than the previously reported 129.

PL/2023/09930: Punters farm. An application for 21 homes on the field behind the cemetery on Tetbury Hill. This has now been approved and building work has started.

PI/2024/06897: Application for 55 homes (by Hollins Strategic Land of Manchester) in the field on the righthand side as you leave Malmesbury on the Sherston road. This was refused by Wiltshire Council on 20th March mainly due to its distance from the town centre and the applicant's failure to demonstrate how they would mitigate the impact of the development on Malmesbury.

PL/2023/08687: Application for 71 homes, Filands (phase 3). Outline planning permission has already been given for this. Wiltshire Council has yet to approve the final detailed plans.

PL/2023/07797: Application for 43 homes on part of the field opposite the allotment entrance on Park Road. Outline planning permission has already been given for this. The detailed plans have yet to be approved. See also PL/2023/08583.

PL/2023/04996: West of Milbourne (92 homes). Miiler Homes has launched an appeal.

Lime Down Solar Park Update

By the time you read this the second stage consultation will have closed. Island Green Power (IGP) will now take most of the rest of the year to put together a detailed proposal to submit to the Planning Inspectorate.

In their proposal IGP must demonstrate how they have taken local views into account. They also must report on the environmental impact of the project and how they propose to minimise this.

The Planning Inspectorate has 28 days to decide if the proposal meets the necessary requirements. If it does, it will proceed to the examination stage.

During the examination stage interested parties will be able to register with the Planning Inspectorate and submit their views in writing.

After the examination phase the Planning Inspectorate has three months to submit its recommendation to the Secretary of State. The Secretary of State has a further three months to make a final decision.

If successful IGP will begin construction in 2027.

Crime Update

The latest crime figures relate to January.

For Malmesbury Town, reported crimes were Violence and Sexual Offences, 15; Anti-social Behaviour, 8; Criminal Damage and Arson, 2; Other Crime, 5. For the rural area surrounding Malmesbury, the figures were Burglary, 2; Violence and Sexual Offences, 5; Anti-social behaviour, 2; Other Crime, 3.

Wiltshire Police's current priorities for our area are:

- **Burglary Concerns**
Tackling and reducing incidents of dwelling burglary. Proactive patrolling, intelligence-led investigations, and community engagement to prevent break-ins and ensure residents feel safe in their homes. Efforts will include raising awareness about home security measures, targeting offenders, and working closely with local partners to disrupt criminal activity. By fostering vigilance and cooperation, the aim is to make our communities more resilient to burglary.
- **Rural Crime**
Proactively tackle farm thefts, poaching, hare coursing, and heritage crime by increasing high-visibility patrols, engaging with rural communities, and working closely with partner agencies to disrupt and deter criminal activity. Focus on intelligence-led operations and community awareness to protect livelihoods and preserve our local heritage.

To get involved and participate in the exchange of information with Wiltshire Police, Dorset and Wiltshire Fire and Rescue Service, Get Safe Online and Neighbourhood Watch - sign up to Community Messaging via www.wiltsmessaging.co.uk.

Snippet



Our canine pavement artist has been at it again. Malmesbury's very own 'Barksy'?

Photo and name Barksy courtesy of Dave Witt.

Snippet

Unless buses are getting smaller ...



You'd think the yellow lines and the words BUS STOP in large yellow capitals in the box would be a fairly good clue that this is not a parking space!



GAS - OIL - LPG

At TP Heating services, we're committed to offering you the best customer service and competitive prices. Covering Wiltshire and Gloucestershire, we offer a comprehensive service for all your heating requirements.

- Boiler Servicing
- Landlord Certification
- Fault Finding and Diagnostics
- Boiler Replacement
- Central Heating System Installation
- Unvented Cylinder Installation and Repair
- Smart Home Controls

Ex British Gas Engineer

All Aspects of Plumbing and Heating Undertaken

Contact Tom Punter -
Tel: 07501154677

Email: tom@tpheatingservices.co.uk



- Family
- Wills, Trusts & Probate
- Personal Injury
- Clinical Negligence
- Residential Property
- Commercial Property
- Corporate
- Dispute Resolution

Contact our Malmesbury office today on
01666 822671 or visit fmsolicitors.co.uk

CHIPPENHAM	FROME	MALMESBURY	SWINDON	TROWBRIDGE	WARMINSTER
01249 444300	01373 485485	01666 822671	01793 522688	01225 755621	01985 217464



BERTIE B'S HOME & LIFESTYLE



AN INDEPENDENT HOME INTERIORS SH-
MALMESBURY

- KITCHEN AND DINING: glassware, ceramics, some utensils.
- BATHROOM AND BODY: various soaps, bath/ shower gels and other bathroom accessories.
- LIVING/SOFT FURNISHINGS: rugs, throws, cushions, a few unique, small pieces of furniture, photo frames, candles, diffusers.
- LITTLE BERTIES: a room dedicated to children: wooden toys and games, eating utensils, lamps and some clothing.

36 Cross Hayes, Malmesbury, Wiltshire, SN16 9BG

OPEN Monday to Saturday: 9.30am - 5.00pm
Sunday: 11.00am - 4.00pm

LUXURY LOOSE HANDMADE CHOCOLATES, MADE IN THE COTSWOLDS....COMING MID OCTOBER!!! DELICIOUS.....



Patient Survey Results from Malmesbury Primary Care Centre

93% of our patients are satisfied or very satisfied with their experience of the surgery (76% in 2023)

THANK YOU!

We have been working hard and are delighted with these results!
We will be reviewing all your feedback very carefully so please watch this space for next steps

RESULTS OF 2,415 SURVEY RESPONSES IN 2025 AND 2,662 IN 2023

... and 68% preferred this to the 8 am rush !

75%

of patients now order their repeat prescriptions online or via the NHS App - an increase of 15% since 2023!

93%

of patients are satisfied or very satisfied to be able to book a routine GP appointment in advance with a GP of their choice

...what a great improvement! 50% were satisfied in 2023

80%

of patients are satisfied or very satisfied with their experience of making an appointment

70%

of patients have noticed the improvements in our new telephone system



Since 2024, patients have been able to contact us online via PATCHS. Over 5500 patients are now registered for the service.
Find out more on our website

78%

of patients who have contacted us online found PATCHs useful or very useful

... and most would like to contact us early morning (46%) or during the working day (44%)

Question to the Jackdaw

When is a pothole not a pothole?

A. When Wiltshire Council says it isn't. The council has strict criteria for assessing whether a pothole is a priority for repair depending on the ranking of the road, e.g. strategic route, local link road, etc.; the location of the pothole, e.g. near a designated pedestrian crossing point; and the depth and diameter of the pothole. Full information can be found on its website in the Wiltshire Highways Safety Inspection Manual (yes, it really does have one). You can report potholes through its website – if you have to claim against it for damage to your car caused by one of its potholes always make sure that the pothole has been reported before submitting your claim.



The Beeches Homecare Services is a family run company celebrating over 30 years of providing quality care and support to you in your own home.

Areas covered are Malmesbury, Sherston, Tetbury, Chippenham, Cirencester and surrounding villages.

Call us today on
01666 825496

For more info, visit our website:
www.beecheshomecare.co.uk

Care & Services

- ✓ Personal Care
- ✓ Medication
- ✓ Companionship
- ✓ Domestic Services
- ✓ Grocery Shopping



CHAMPION ELECTRICS LTD
Electricians you can trust

Looking for a Local Electrician based in Malmesbury? Look no further!

- New Circuits
- New Fusebox
- Additional Sockets
- Additional Lighting
- Repairs / replacement on fixed wiring, sockets, lights
- Electrical Installation Condition Reports (EICR)
- Landlord Certificates

For a Quotation or further information please reach out !

07462790410

ChampionelectricsLtd@gmail.com

Also for peace of mind check out our lovely reviews on Facebook and Google!



Malmesbury Bridge Club

A friendly club, open to players of all abilities

Mondays & Thursdays 6.45pm, at Malmesbury Town Hall,

Wednesdays 6.45pm & Fridays 2.15pm, online *

Before your first visit, give us a call to find out more

Call Carol Paton on 01666 502036 or email
patonbagpath@btinternet.com

**We can talk you through how to get online.*

Cost per in-person session £1.50 (£2 non-members)

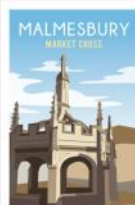
We also run one-to-one refresher lessons & beginners' courses.

More info at Malmesbury Bridge Club website



AFFILIATED CLUB

If you need a partner, we can pair you up.



Original poster prints & greeting cards of places you love in the Cotswolds & beyond



Find over 130 designs
cotswoldposters.com



COTSWOLD POSTER CO

Malmesbury Station Brought to Life

In our last edition, Bill Reed wrote about a detailed model of the Malmesbury railway station area which was due to be displayed in the Rausing Building over the weekend of 15th March.

The Malmesbury Jackdaw attended the opening of the exhibition on 14th March when Bill and Malmesbury mayor,

Cllr. Phil Exton, performed the grand unveiling. We went expecting to see a model railway, but what we saw was so much more. It was a piece of Malmesbury's history frozen in time. Yes, we've seen photos of the area and read Mike Fenton's brilliant books about the Malmesbury Branch Line, but this



The Grand Unveiling. Photo: Richard Harris Photography

was different. We could see in glorious 3D the whole of the area from where the Railway

Hotel stood to the tunnel entrance past Lover's Lane. There was no fire station, nor ambulance station; no industrial units, nor vehicle repair centre, and no large car park. Instead, there were the station buildings, tracks and sidings, storage sheds, small allotments, lots of trees and grass, and a bridge to the tunnel over the river – all in beautifully detailed n-gauge miniature. The original rolling stock has been lost, but other models of the same scale and vintage were sought and added to the display for the event.



Photo: Richard Harris Photography

The model was built in 2015 by Canon Revd. Chris Burch, a Leicestershire cleric. Sadly, Chris passed away in 2016 but his widow, Roz, kindly loaned his notes about the model to complement the exhibition. He has left a splendid legacy for Malmesbury, which leads us on to a thorny subject.

The model was, after Chris's passing, due to be scrapped, but it was rescued from its fate by Richard Woodbridge, Secretary of Swindon Model Railway Club, to whom Malmesbury owes a debt of thanks. The model has been kept in Richard's garage and he's very keen that it is not there, but on public display. In addition to Malmesbury, it's also been temporarily exhibited in Leicester, Weston-super-Mare and Swindon amongst other places. Richard tells us that he unsuccessfully offered it on long-term loan (it's not for sale) to STEAM in Swindon, which didn't want it, and Athelstan Museum in Malmesbury which didn't have space for it.

The Malmesbury Jackdaw, contends that this model must be displayed in Malmesbury, a town that is so proud of its history. There has to be somewhere here to host this wonderful representation of Chris's skills and the evolution of our beloved town.



Photo: Bill Reed

During its short stay, the model received 548 visitors and 32 pages of appreciative comments! We rest our case.



St Joseph's Catholic Primary School

Our village school in the heart of town!

Visit our school website for more information www.st-josephs-malmesbury.wilts.sch.uk

Come and see what we do. Tel: 01666 822331

Welcoming all faiths and no faith.



Ofsted
Good
Provider

Walking in the footsteps of Jesus, loving and serving together.

Saddle Up

Gordon Williams has been finding out about another Malmesbury business.

Photos: Richard Harris Photography

You must have walked past on many occasions the large, modern grey stone shop in the Horsefair. Have you, like me, ever wondered what goes on in the workshop of *Grant Barnes & Son Saddlers*? Well, I had the opportunity recently to find out, so off I went, armed with my "Racing Post" and notebook.



My first impression, as I stepped inside, was how beautifully well stocked the shop is with everything connected to horses and horse riding. Philip was serving a satisfied customer with his usual warm and courteous manner, so I rambled round the saddles, bits, brooms, supplements and everything equestrian.



"I must show you around". The shop is like the Tardis! Beside the stock room, Philip took me behind the scenes to see where the many coloured leather hides are stacked. There was a couple of vintage Singer sewing machines, one adapted with a long arm for a longer range. "There's our lost property shelf; you'd be amazed how many don't return to pick the item they left for repair".

Upstairs next, to meet genial brother Richard and third brother, Simon who, on leaving school, went on to a successful career in engineering. This is their workshop area, full of rows of the tools of the trade... old, new and sharp. For so many years, this where the skills of repairing, restoring and bespoke jobs have gone on.

Philip

So, down to business then in the uncluttered next-door office full of memorabilia and equestrian related decor.

Who was Mr Grant Barnes?

That was our grandfather who was a saddler in Chippenham. Our dad was David.

When and where did he start up the business?

That would be just after the war at Stainsbridge Mill, where the pet shop is. He would cycle over to Cirencester, then to Tetbury on a Saturday morning to work and come back here to finish jobs in the afternoon.

How many people do you employ?

Just Richard and myself, it's a good family business. And we never argue!



Richard

Why did you choose to move here to the Horsefair?

The opportunity came to set up the new workshop when Colonel Whitbread, who was a regular customer, offered the land next to The Bath Arms. It was owned by Whitbread Brewery. That was around 1967, I think. Local firms such as Jobbins built it (*Philip showed me the paperwork to prove it*).

What qualifications did you require for your job?

There's grandfather's certificate on the wall. We left school at 15 then and did a five-year apprenticeship; all on site. Not sure if they do that now.

Your work must give you great satisfaction?

You never stop learning (Richard chipped in), even after 50 years of serving customers.

And the nature of your work?

We make and repair on site everything associated with the horse.



Some of the Leather Hides

Where do find the leather you require?

Our main source is a company in Walsall. (*And what's the nickname of the Walsall football team?*). They supply all colours and even water buffalo hide which is a very strong leather. Richard has visited Colyton in Devon, where they make leather in pits, the old fashion way of oak bark tanning.

I couldn't help notice the mark on the outside wall where the "By Appointment" used to hang...

We had the Royal Warrant since 4th January 2004, but when it came up for renewal, we decided against it as the King no longer keeps horses at Highgrove. There's the old plaque behind you!



Sewing Machines

Living here, as we do in equine country what is the nature of your customers?

From youngsters with ponies right up to professional riders, such as polo players, eventers and serious riders, Richard told me.

Any VIP customers you can mention?

They all are! In the past, we've sold goods and fixed and repaired items for the Royal Family. I suppose the name most people will remember is Mark Phillips. We've done work for his family over in Somerford. Other than that, no one really stands out as a celebrity customer.

And finally, what's the future of the shop?

Sadly, for various reasons, when we retire, we don't have anybody to pass the business onto. It wouldn't seem right somehow to sell on the name. We're proud that it's a family business. Besides, we need to keep working to pay the bills!

After chatting with my hosts about old school days (*now who remembers T.T. Richards, Ernie Kidd, Mike Gee, Colin Beswick, Ron Peel and so on*) it was time to take my leave after a fascinating conversation. Now I know what goes on behind those large windows. And riding crops have the hook end for opening gates without having to dismount and there are lengths of straps for keeping hounds away from the hooves.

It will be a sad day, though, for the town when the evergreen brothers decide to call it a day and prefer not to sell the business on, so as not to break the tradition and family connection. As Philip puts it, years of lack of apprenticeships as schools moved to the academic route has had its consequences

What a Milestone!

We're delighted to feature Kay Isted who has recently completed her 100th blood donation. Kay comments:

'I started donating in 1977 when the ladies I worked with at Linolite invited me along with them. It's taken a long time to get here, but am glad I have.'

'I'd encourage anyone who can donate to do so, the NHS staff are always very nice and always grateful for donations.'

Congratulations Kay on a brilliant achievement.

Photo supplied by Kay Isted



**MATTHEWS
OF MALMESBURY**

Est 1880

**MATTHEWS
OF TETBURY**

Est 1880

INDEPENDENT FUNERAL DIRECTORS

Traditional funerals and woodland burials.

24 hours a day, 365 days a year.

Interest free pre-payment funeral plans available.

OUR FAMILY WILL CARE FOR YOUR FAMILY



Golden Charter
Funeral Plans



Malmesbury

01666 822216

7 BURNHAM ROAD, MALMESBURY
WILTSHIRE SN16 0BQ
WWW.MATTHEWSOFMALMESBURY.COM

Tetbury

01666 505199

23 MARKET PLACE, TETBURY
GLOUCESTERSHIRE GL8 8DD
WWW.MATTHEWSOFTETBURY.COM

BYBROOK

at The Manor House



Michelin starred Bybrook enjoys the most beautiful of settings with a relaxed yet elegant atmosphere. Treat yourself to a Tasting menu crafted from seasonal, local ingredients by Executive Chef Rob Potter and his team, enhanced with wines from around the world.

Open Wednesday to Sunday

Four course | £120 per person
Six course | £150 per person

www.bybrookrestaurant.co.uk

01249 782206 | themanorhouse@exclusive.co.uk



Traditional Blacksmith based in Malmesbury

Designs hand forged bespoke ironwork including :

- Hand railings
- Gates
- Banister rails
- Curtain poles
- Weather vanes
- Restoration work
- Conservation work
- Garden arches
- Large or small projects

Taught and guided by Hector Cole FWCB MBE. Craig was awarded the certificate of Merit by the Worshipful Company Of Blacksmiths in 2017.

For a free no obligation quote call Craig:

Mobile: 07845289808

Tel: 01666 826578

Email: craig@cpayneblacksmith.co.uk



CPayneBlacksmith



[cpayneblacksmith](https://www.instagram.com/cpayneblacksmith)



KITCHENS
BATHROOMS
BEDROOMS
COLOUR SCHEMES
HOUSE RENOVATIONS

07557 477 118

wilvaninteriors@gmail.com

Get in touch to discuss your next project



www.wilvaninteriors.com



Available to book for your upcoming event, whatever the occasion.

Find out more and book online at crudwellvillagehall.org

Or just pay us a visit! Find us at
Tetbury Ln, Crudwell, Malmesbury
SN16 9HB



Snippet

Utility Company Invents Time Travel



Has Wessex Water found a way of minimising disruption? It appeared to be confident of finishing this work nearly four weeks before it was due to start.

BRUNEL ROOFING

Reliable And Trusted Roofers

- New Roofs
- Slating
- Tiling
- Lead Work
- Pointing
- Dry Roof Systems
- Fascias & Soffits
- Guttering
- Flat Roofs
- Moss Removal
- Roof Repairs
- Chimney Repairs
- Bird Proofing For Solar Panels



Fully Qualified Pitched & Flat Roof Installers
Excellent Reviews & References Available
All Work Guaranteed

Contact Us For A Free Quote

07717 860115

01793 700761

info@brunelroofing.co.uk

Brooks

INDEPENDENT FUNERAL DIRECTORS

21 High Street, Malmesbury



- Qualified, experienced and local funeral director Chris Brooks DipFD
- Personalised modern or traditional funeral arrangements no matter how simple or elaborate
- Funeral Plans tailored to your needs
- Transparent costs
- Direct cremation service available, delivered with the personal care and attention we are proud of.

01666 822200 24 hours

www.brooksofmalmesbury.co.uk

Dedicated to providing personal, compassionate care and support with the highest level of service.



If You Like Trees You're Going to Love This

Did you know that Malmesbury will be slap bang in the middle of a forest following a recent government announcement?

Following the announcement on 21st March, a new national forest, called Western Forest, will be created; stretching from the Cotswolds to the Mendips. The aim is to gradually plant 20 million trees creating 2500 hectares of new woodland. So, you won't be completely surrounded by trees, but it sounds like good news for some of our struggling woodland wildlife.

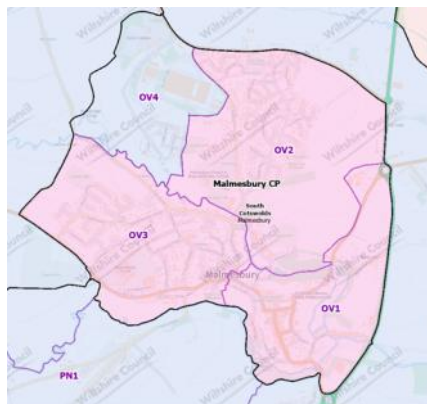
Please see <https://forestofavon.org/western-forest/> for more details



All Change

By the time you read this, the 2025 local elections may be just about to happen; be happening or have just happened, depending on how desperate you were to read *The Malmesbury Jackdaw* when it dropped through your letter box.

You may (or may not) be aware that parish councils can be subdivided into wards which are defined areas within a parish. There is a change for Malmesbury this year as it will be divided up into four wards to reflect the changes to the town layout created by recent housing development. The number of councillors allocated to each ward has meant that the total number of councillor positions has increased by one from 16 to 17.



For three of the four wards, however, there will be no need to vote as the number of people standing for election either equals or is less than the number of positions. The nominees will be duly elected unopposed. A vote will only be required for the Malmesbury South ward. See the table below. There are four nominations for the position of Wiltshire Councillor representing Malmesbury, so that will also require a vote.

The new wards will be:

- Malmesbury (Backbridge) – 2 councillors – 1 nomination
- Malmesbury (North) – 6 councillors – 4 nominations
- Malmesbury (West) – 7 councillors – 7 nominations
- Malmesbury (South) – 2 councillors – 3 nominations

Malmesbury Voices - 10 Years of Spoken Memories

Part One - A Tribute to Those No Longer with Us

By Bill Reed

Working conditions in EKCO's secret radar factory in 1939 (Marjorie Dunford and Pauline Evans). Milking the cows in Brokenborough before electricity (John Baldwin). Delivering post on a bicycle to the farms round Minety (Pip Fullerton). Watching the locomotive get under steam at the station early in the morning (Pam Hall). Operating the huge presses at the wartime Linolite factory (Rose Rice). How, after straining to haul the swill wagon up the hill to the Triangle, Cracker Clark's old horse, led by "Greek", would deposit a load of manure outside the fish shop, where it would be swept up by the neighbours to feed their roses (George Pratt). How Wiltshire bustards were portrayed in the Carnival Parade (Bob Browning). Spectacular pranks at the Grammar School (Peter Sheppard). The old cinema on the High Street (Les Hinder).

All of that - and lots, lots more - in their own voices, adding a warmth and depth which text alone does not convey. I think of these memories as stories which are not well known beyond friends and family, and which (if not recorded) are lost to the wider public once the speakers have passed on.

And none of the above are any longer with us. In ten years of the Malmesbury Voices project, I have recorded about 130 people; but of those, at least 20 have passed on. This saddens me, because they have all generously given me and the Museum their time and attention, and in many cases their life stories. However, their voices are preserved in the collection, contributing to Athelstan Museum's objective *"to advance the education of the public in the history and heritage of Malmesbury and the surrounding villages"*.

An unexpected and touching side-effect is that in two funerals I attended - Sue Spencer and Peter Sheppard - their contribution to the Voices collection was mentioned in the tributes. At a third - David Bailey's funeral service - the recordings of his voice were actually played in the Abbey.

My recordings are not the oldest voices in the collection. Thanks to John Lewis, who was Town Clerk in the 1970's, we have some interviews he recorded with Malmesbury residents whose voices were formed in the early part of the last century. These are Edna Pike, of Caudell's Butchers; the sisters Helen and Mabel Hanks from the dairy in Lower High Street; and Harold and Alice Thornbury. Their memories go back to the days of lacemaking classes in the King's Arms organised by Lady Suffolk; the old steam-driven cinema in the Lower High Street; the sale from the house window of produce laboriously carried up from the Common; the school at Stainsbridge long before it was a National Children's Home.

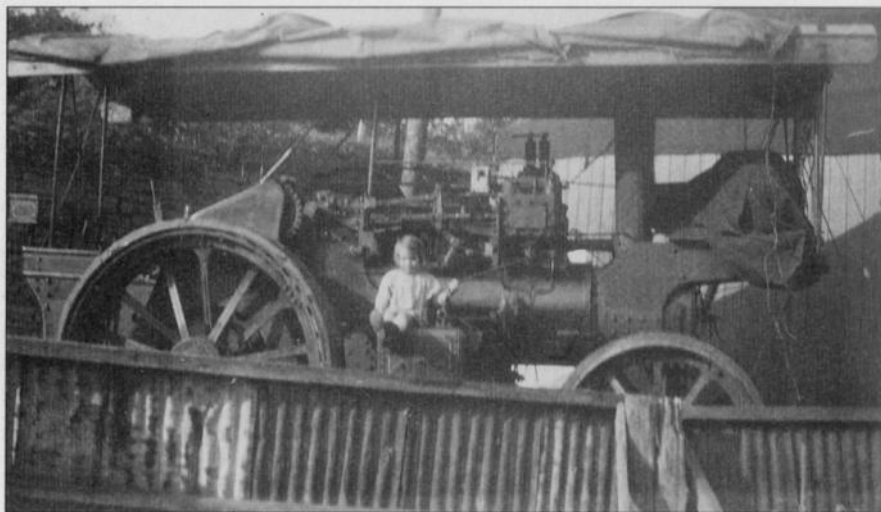
These residents' stories are the warp and weft of Malmesbury life in the 20th century, and their interweaving reveals bigger themes - amongst them the outdoor swimming pool, the

Linolite light fittings factory, EKKO and the telecommunications industry at Cowbridge, life during WW2, the Carnivals, farming and commerce, the old village of Westport, the railway station, the National Children's Home, the Elmer re-enactments ... some of which I will come to in Part Two of this series.

Meanwhile, here's how Les Hinder remembered the old cinema:

"Half way down the Town Hill, it was a sort of wooden shack, with seats and forms. Outside there was a big fairground traction engine, with dynamo. Of course, Malmesbury had no electricity, so the dynamo provided the power for the movie cinema. Run by George Vanstone, he stoked the fire, keeping the dynamo going. Squatting high up, with flywheels turning round at amazing speed. Arthur Phelps worked the projector; he also played the piano at the beginning. Silent films. I was in the cinema one evening with my friend, and Indians, wild western, galloping madly, arrows flying around. And suddenly the Indians started going more slowly, more slowly, till shortly after, stop! Lights went out. Mrs Collins who was the manager hurried up the passageway with a torch, yanking my friend out of his seat, "Run to the Rose & Crown! Fetch Vanstone!" George Vanstone evidently appeared and the cinema started off again. The Red Indians gathering speed!"

The Malmesbury Voices collection is free to access in Athelstan Museum, Tuesday to Saturday 10:30 to 16:30 and Sunday 11:30 to 15:30.



The Lincoln Imp Engine used to operate Malmesbury Cinema in the High Street, in 1927. The engineers were Mr George Vanstone and Mr Dick Bishop.

Photo: Dorothy Barnes sitting on the Lincoln Imp engine used to power the cinema, 1927. Taken from the Archive Photographs series, MALMESBURY, compiled by Dorothy Barnes, Chalford Publishing 1995; ISBN 0 7524 0177 7

Snippet

When the road surface is repaired in Abbey Row, we hope that consideration is given to correctly replacing the stones missing from the site of the old town gate and that they don't suffer 'death by tarmac' as has been the fate of some of the slabs in the Market Cross area.



**Fun, friendly and affordable
social running club.**

MALMESBURY
Jackdaws
RUNNING CLUB

Thursdays
6.45pm

**NEW MEMBERS
WELCOME**

malmesburyjackdaws22@gmail.com
07388 897979

The perfect way to
begin your running
adventure, pick up your
pace or come and meet
new people to run with.



u3a learn,
laugh,
live

Malmesbury & District u3a

Retired? Semi-retired? Looking for new interests?
Why not join us!

We have over 500 members and over 40 interest
groups, including History, Dancing, Gardening,
Languages, Book Clubs and Walking Groups etc.

Check our website for more info:
www.malmesburyu3a.org.uk

or email:

membership@malmesburyu3a.org.uk

Monthly meetings, with a Guest Speaker, are on
the 4th Thursday of each month (10.00 - 12.00)
at Malmesbury Town Hall. Details on our website.
Non-members welcome. 50p donation.

Mayor of Malmesbury's Newsletter – Spring 2025

Well, here it is, the final newsletter of my term as Mayor of Malmesbury. The year has absolutely flown by – it doesn't seem more than a few days since I was voted into office at 7 p.m. on a Tuesday evening in May last year before going headlong into a succession of mayoral duties the next day.



Straight to work!

I feel so lucky and privileged to have represented the town where my family has been since 1650, following in the footsteps of my dear wife, Julie, who was mayor in 2019/20. We are one of only a handful of married couples where each has been elected as the monarch's representative in Malmesbury.

I'm also fortunate to have been mayor over a period when so much has happened; you could almost describe it as three mayoral terms packed into one! It's impossible to list every event and to name all the great people that worked so hard to make them happen but, if I was asked to pick a highlight, it would be the Beacon Lighting on 6th June to commemorate the 80th anniversary of D-Day. To be able to deliver the king's words in the form of the D-Day proclamation was an honour afforded to very few and one that will live with me forever.

Being mayor of Malmesbury doesn't just involve local duties; there can be national and international duties, too. Nationally, one of my highlights was a visit to Kingston upon Thames for the launch of their Athelstan 2025 celebrations. Last year, we had our own wonderful Athelstan 1100 celebrations to mark the anniversary of Athelstan becoming king. Kingston upon Thames is celebrating his actual coronation which took place there in 925. Incidentally, it was great to be able to see the finds from Malmesbury's Big Athelstan Dig recently,



Cllr Phil Exton and the Mayor of Kingston upon Thames

including pottery fragments from the time of Athelstan. Internationally, I have represented Malmesbury in Gien, our twin town in France, and at the formal twinning agreement with Bad Hersfeld in Germany. I also signed an official friendship agreement during an online ceremony with Anatoli Bondarenko, the Mayor of Cherkasy, Ukraine.

Speaking in public and talking to people I don't know are not skills that come naturally to me. I've had to work at it and have become more comfortable as the year has progressed. I haven't been able to use the great 'ice breaker' I had when Julie was mayor and I was her consort. The badge I was given to wear at official functions bore one word ... 'Mayoress'. So, if anyone asked what my role was, I simply said "I'm the mayoress" which usually got the conversation going.



The "Big Dig" team with Cllr Phil Exton



Outside Riverside Centre. Image supplied

On a more serious note, I must mention Malmesbury Town Council's decision last year to issue a vote of no confidence in the leadership of Wiltshire Council over two planning decisions and a threat to the future of the Riverside Centre. With regard to planning, whilst discussions continue, Wiltshire Council's lack of housing land supply and the anticipated increase in house building requirements from central government mean that Malmesbury is likely to get more new housing despite having

already met its current obligations up to 2038 under Wiltshire's Local Plan. This will put more strain on the town's infrastructure and a way needs to be found to ensure that the Section 106 money received by Wiltshire Council from developers for infrastructure improvement around new housing developments is used where

it is needed. With regard to the Riverside Centre, the impending withdrawal of support by Wiltshire Council remains a threat to its existence from early 2026 – another attack on our infrastructure. The skate park on the site, which has recently affiliated with the UK's governing body for skateboarding, Skateboard GB, is also threatened. We are still seeking ways to save it, although the injunction date in July comes after the local elections so, at the time of writing, we will have to see which administration is in place and, if there is a change, what its views are.

There are also other issues affecting Malmesbury. Work to alleviate flooding in certain areas of town is progressing, but is proving to be complex, costly and quite slow. Climate change is real so we must continue our efforts to protect our town. The state of some roads and the abundance of potholes is another area of major concern. Whilst the town council can lobby for repair work to be done, the responsibility for road repairs lies with Wiltshire Council and we must hope that Malmesbury receives some benefit from the money being provided by central government for this purpose.



eat:Malmesbury in full swing

There have been some splendid events during my year, some of which I've already mentioned. The carnival was a great success, generating money so that grants could be given to local causes. I wish the carnival committee well this year and hope that they get the support they need from the community to ensure that it continues to be

one of the brightest jewels in Malmesbury's crown. *eat: Malmesbury* was also a highlight with visitors thronging the High Street and will take place again this year. 2025 brings the 80th anniversary of the end of the Second World War and Malmesbury intends to hold beacon events to commemorate both VE day and VJ

day so we can pay our respects to those who gave everything they had for everything we have today.

I'm delighted to have been able to support HEALS and Malmesbury Amateur Boxing Club as my mayoral good causes. They serve our community in different, but equally valuable ways. At the time of writing, I'm waiting to see how much my 'Boogie with the Mayor' event has raised; it was incredibly well attended and I'm hopeful of an impressive result. My final event will be the Sri Lankan Banquet which, again, I hope will raise plenty of money for these two great local institutions.

Having attended a lot of functions and events during my year, I've had to work out a way of avoiding the effects of the beer and wine that often flows in large quantities. My tip is to accept one alcoholic drink to take the pressure off and then switch to soft drinks. If the pressure is maintained, order a zero-alcohol beer, drink it from the bottle with your hand over the label and no one knows what you're drinking. That's it for the health guidance!



With Julie at an Abbey event

Finally, I'd like to thank Julie for her love and support throughout. A huge thank you also to everyone who has worked so hard to make Malmesbury the great place to live that it genuinely is and assisted me during my tenure. If I listed everyone, I'd need many more pages, so I'd just like to say a particular thank you to Lynda Cryer, Mayor's Secretary, and all of the office staff at the Town Hall.

It's been an absolute honour and privilege to serve the people of Malmesbury as mayor and I offer my very best wishes to my successor.

Cllr. Phil Exton – Mayor of Malmesbury



Part of the **SUMER** Group

Are you ready for the 2025/26 tax year?

When you're busy running a business, keeping on top of everything can be a real challenge.

Our team is here to make sure you're all set for the year ahead, so you can crack on with growing your business, not getting bogged down in the paperwork.

01666 823201 • monahans.co.uk

Monahans – incorporating McGills



Nook & HUDDLE

COWORKING to find your focus & fuel collaboration

FREE COFFEE | FAST WI-FI | PRINTING
BREAKOUT AREAS | MEETING SPACE

- Day Guest Pass
- Coworking Memberships
- Permanent Work Pods
- Meeting Space
- Community & Collaboration



Get in touch to book a tour and a half day free coworking trial.

[WWW.NOOKANDHUDDLE.COM](https://www.nookandhuddle.com)

info@nookandhuddle.com
44 High Street, Malmesbury

Nook & Huddle

Malmesbury's newest coworking and community space, *Nook & Huddle*, was officially opened on Monday 24th by the Mayor of Malmesbury, Cllr Phil Exton, marking an exciting milestone for local businesses, freelancers, and hybrid workers.

Following a hugely successful open day on 20th March, which welcomed over 40 visitors eager to explore the space, *Nook & Huddle* is now fully open for business. The innovative coworking hub, based in the beautifully restored historic library building, offers flexible workspaces designed to give small businesses a high street presence while fostering creativity, collaboration, and community.

Founder Sara Harrod expressed her excitement about the launch:

"Nook & Huddle is all about bringing people together—whether you're a freelancer looking for a productive space, a small business needing visibility, or someone who just wants to get out of the home office and work alongside others. The response so far has been incredible, and I'm thrilled to see this vision come to life."

The Mayor of Malmesbury, praised the initiative, saying:

"Supporting local businesses is at the heart of our town's future, and Nook & Huddle is a fantastic addition to Malmesbury. This space will provide vital support for our entrepreneurs and freelancers, helping them thrive in a collaborative environment."

A New Hub for Malmesbury's Business Community

With more people embracing flexible and remote working, Nook & Huddle aims to bridge the gap between home offices and traditional workplaces. The space has been carefully designed to create an inspiring and professional environment where people can work productively while connecting with like-minded individuals.

Sara Harrod, who has a background in marketing and business consultancy, saw a real need for a space that goes beyond just desks and WiFi. *"We wanted to create something that truly supports local businesses—whether through networking opportunities, workshops, or simply providing an affordable and welcoming place to work. It's all about making meaningful connections and ensuring that independent businesses and home workers have the support they need to thrive."*

What Nook & Huddle Offers:

Flexible Workspaces – Hot desks, dedicated desks, and private work pods on a membership or pay as you go basis.

A Community Hub – A space to connect, collaborate, and grow

Business Visibility – Helping small businesses gain a high street presence and for hybrid home workers to have a comfortable work environment away from home.

Events & Workshops – Free for members, led by experts across industries

As *Nook & Huddle* opens its doors, businesses and individuals are invited to visit, explore, and experience a new way of working in Malmesbury.

For more information, visit www.nookandhuddle.com



TETBURY GOODS SHED

A R T S C E N T R E



- May 2** **Deeper Purple:** a tribute to the giants of classic rock that have influenced generations of musicians and music fans for over 50 years! Tickets in advance £22. 7.30pm
- May 10** **Red Priest:** Following their last, sold-out, appearance at the Goods Shed, be prepared for another stunning programme of classics, performed with their trademark flair and virtuosity. Tickets in advance £24. 7.30pm
- May 28** **Playtime Theatre:** A play-along theatre adventure for 2-6-year-olds and their grown ups. This month: “A Woodland Wonder” – join Ratty as she learns about the environment Tickets £5 under 1 free. 10am (also June 25)
- June 1** **Voodoo Room:** A stunning power trio, featuring the music of Hendrix, Clapton and Cream.. No wigs, no gimmicks - simply great music played by great musicians. Tickets in advance £20. 6pm
- June 12** **National Theatre Live:** A Streetcar Named Desire. Gillian Anderson, Vanessa Kirby, and Ben Foster lead the cast in Tennessee Williams’ timeless masterpiece. Tickets in advance £15. 7pm
- June 21** **Adult Drawing Class with Clare Sanders:** For those wanting to hone skills, re-ignite old enthusiasms, or have a go at something new. you will come away feeling refreshed and inspired. £20. 10am. Also July 19.
- July 5** **Alfie Moore – A Face for Radio:** A surprising middle-aged career shift turned battle-scarred Alfie from street cop to BBC radio star. But when TV fame beckoned could he grasp it? Tickets in advance £18. 8pm

Check our website for further details of films, Wednesday afternoon concerts, exhibitions and talks and to book tickets:
www.tetburygoodsshed.co.uk

Charity v Bureaucracy

Received from Ray Sanderson

Nearly 350 female students in Malmesbury, South Africa will benefit from a Rotary Club of Royal Wootton Bassett and District donation, despite customs charges and fines of £350.00.

During the last 18 months, members' wives and volunteers have produced 50 period poverty packs for female students in Malmesbury South Africa. Greatly helped by Helen Chapman of The Fabric Shack who provided the washable material to make them. She also obtained volunteers from Malmesbury to produce them.

When a friend of a Rotarian heard of the plight of these students whose education was disrupted by their monthly cycle, Jim Pearce of Insight Medical Ltd of Tetbury, kindly donated 300 washable menstrual cups and arranged the transportation to Cape Town.



Jim and Linda with Cups and Pads

purchased from a UK chain store. Our customs declaration stated that the products were made in the UK, the pads and bags were, but the knickers according to their labels were made in Bangladesh. So, a fine was levied for misdeclaration, then, whilst emails travelled between the two countries, additional costs increased the amount to £350.00 sterling which could have improved the education of another 150 female students.

Malmesbury Opticians are also supporting people in South Africa; they have donated some 500 pairs of used glasses, which will be checked and categorised into different strengths, and distributed. This project along with many others are arranged by Rotary International's Intercountry Committee for Great Britain and South Africa



Helen with Linda Locke (president of Rotary Club of RWB & District)

Once in Cape Town, and with all the paperwork completed, the Rotary Club was shocked to be hit with a £350.00 invoice from the South African Revenue Service as the contents of the consignment were of a charitable status, produced, paid for and transported by Rotarians, volunteers and sponsors in the UK

Well, not according to the narrow-minded South African Customs. Within the period packs were two pairs of knickers of various sizes, 100 pairs in total,



Malmesbury Opticians



Radfield
Home Care

Helping you age well
in your own home



Call us for a chat about care

01249 588 105

Suite A, First Floor, 3-4 New Rd, Chippenham,
SN15 1EJ



chippenham@radfieldhomecare.co.uk
www.radfieldhomecare.co.uk

Get creative this Summer

Gallery | Art Supplies



caerbladon

24 High Street, Malmesbury

caerbladon.co.uk

Houses of Parliament

Our aspiring young reporters, Lily and Kira, entered the heart of British politics as they visited the Houses of Parliament and interviewed South Cotswolds MP, Roz Savage.

Dear Jackdaw readers, for this article we stepped things up a notch and an amazing opportunity opened up for us (thanks Cllr. Gavin Grant!) to go the Houses of Parliament to meet Roz Savage, our local MP. Before we met Roz, we were shown round Parliament by Isaac Tucker, Roz's Parliamentary Assistant. Isaac was brought up in Malmesbury and went to Malmesbury Primary and Secondary schools.



Kira and Lily on Westminster Bridge. Image supplied

Kira: Why did you choose to represent our area? Are you from Malmesbury?

Roz: I didn't grow up around here, but I moved to Gloucestershire six years ago. I never want to leave!

Lily: What are your thoughts on Lime Down?

Roz: I am an environmentalist, so I know that we need to move away from fossil fuels for all sorts of reasons - for clean air, for energy security and because fuel is running out. But, to my mind, Lime Down is just too big; it's in the wrong place and it's owned by the wrong people. I would like to see smaller solar installations on rooftops and on brownfield sites closer to where the electricity is going to be used, led by communities rather than motivated by profit.

Kira: Why does it take so long to get a doctor's appointment?

Roz: We don't have enough doctors. So, one of the good things this government is doing is focussing more on keeping people healthy, but they also really do need to solve the crisis in getting GP appointments because it's ridiculous at the moment. The NHS needs investment, and quite a radical rethink. Also, NHS dentists - we definitely need more dentists who are willing to take NHS patients because it's currently a terrible situation.

Lily: Are you planning on writing any more books about rowing?

Roz: I wrote a book about the Atlantic, a book about the Pacific and a book about the Indian Ocean. So, I'm over writing books about rowing. I hope my next book might be about what I achieve as an MP to save British nature.

Kira: Are we safe to swim in our rivers at the moment?

Roz: We're doing a lot of work around the issue of water quality, around flooding and sewage in the rivers. I think it was a big mistake putting the water companies into private ownership - that profit model isn't suitable for public utilities. We desperately need to clean up the rivers. The rivers are not good for swimming and not good for the poor fish and the plants that have to live in them, so it's really important to get our rivers cleaned up.

Lily: What is a Liberal Democrat and why did you choose that party?

Roz: We want to see everyone have the opportunity to live a good, decent and enjoyable life, so we believe that a fair society is a better society. We think that we should be taxing ordinary people less and we should be taxing the really big corporations more, especially the tech giants. I could've joined any of the parties really. I wasn't in a party when I decided to stand for Parliament, but the manifesto for the Liberal Democrats really resonated. Our values of liberty, equality, democracy, community, internationalism and environmentalism and the most European policy. I think we should be working more closely with Europe. I have to say I don't regret my choice for a moment. The people I've met through the Liberal Democrats have been fantastic and I'm really proud of my colleagues here in Westminster.

Kira: What other things are you going to focus on in the future?

Roz: I don't think the government is doing enough on nature and so I'm looking forward to working with a lot of the really fantastic organisations in the South Cotswolds to improve nature, to grow more of our food closer to home and to have more community energy projects. It's really about making the Cotswolds more resilient, more sustainable and more self-sufficient.



Interviewing Roz. Image: Richard Harris Photography

Lily: Did you get lonely when you were rowing?

Roz: I don't think lonely is quite the right word. I was very alone at times. I think the really big thing I learned from that was, if you'd told me at the start of that crossing that I was going to be alone without any music, audiobooks or podcasts or anything for three and a half months, I would've thought it was absolutely unimaginable. When you get out there you don't really have any choice, because my stereo broke; it's really good to be able to get to know

yourself. I think we should put a few more politicians into little row boats for several months.

We also asked our fellow year sixers at Malmesbury C of E Primary School to come up with some questions for us to ask. There were so many questions that we couldn't ask them all, but here are a few of them:

Max Curtin and Skyla Hudson: How much money do you earn?

Roz: It's not a secret, it's Googleable – it's just about to go up to £93,000 per year.

Isla Bartlett: If you could do any job in the world apart from being an MP, what would it be?

Roz: I enjoyed my previous job – travelling around talking about my rowing and the environment.

Madeline Lees: How do you become a member of Parliament?

Roz: First of all, you have to become an approved candidate and do various tests including a full day assessment, where they set different exercises like a mini version of being an MP for a day. Once you're an approved candidate, you have to get selected by your local constituency party to stand in the next general election, so I actually had to go through that twice because the boundaries changed. You get interviewed by the local party but, even before then, you have to go round and try and persuade all the local party members to vote for you; that you're the best person for the job. Once you've been selected by your local party, then you wait for the next general election to happen, which is when you stand against the candidates from the other parties. That's what happened in July last year and I was lucky enough to win.

Leo Marsh: If you could change anything for the better in Malmesbury, what would it be?



*In Westminster Hall
Image: Richard Harris Photography*

Roz: Malmesbury is fantastic and it has got a lot of good things, but there are some people who are finding life difficult. They don't have enough money or they're trying to get a job, or they've got problems with their physical or mental health and it's not always easy for them to get the support from the government that they need. I would like to see everybody have enough support financially to have a decent life and have the kind of opportunities I think everybody deserves. Liberal Democrats really believe that everyone has got potential, and we want to help those struggling with disadvantages and see people fulfil their potential.

Georgie Flockhart: What do you think you can change in the UK?

Roz: That's a bit more difficult, because at the moment the Liberal Democrats are the third biggest party in Parliament, which means that we don't have as much power to change things as the biggest party does. The Labour party is the biggest one at the moment, so they're the ones who have really got the power to make a difference. I was an environmental campaigner for 22 years before I got here, so environmental issues are still really important to me. I feel really sad that we've lost so much of our nature and so many of

our trees. There are a lot of people that really care about the environment in Malmesbury and South Cotswolds who I really like to work with, especially the farmers. Farmland covers 70% of our

country so I think when you help farmers to do the right things for nature it makes a really big difference.

Junior Rocatoluma: What are your likes and dislikes about being a Member of Parliament?

Roz: It's an amazing opportunity to try and make a difference for the better. There are a lot of really interesting and smart people here that I really enjoy working with and it's pretty cool walking across Westminster Bridge in the morning, coming to work and seeing Big Ben. I don't think that'll ever get old. What don't I like about it? It's really hard work and the hours are very long. A lot of people criticise me and I know it's not personal. It's just because I'm a politician or it's because I'm a Liberal Democrat, but I think people sometimes forget that MPs are human beings as well and we have feelings and it hurts when people are nasty about us, especially when we're trying really hard to do good things.



*Roz, Kira & Lily in Parliament Square.
Image: Richard Harris Photography*

Millie Vizor: What did you eat when you rowed across the Atlantic?

Roz: I ate freeze-dried meals and I also ate lots of dried fruit and nuts. I also used to grow my own bean sprouts, like peas and beans and lentils. I had a sprouting pot so every three days you've got really healthy bean sprouts like a super food. I did like a bit of chocolate when I was doing a rowing shift at night to keep me awake. I am very healthy, but on my Atlantic crossing I did eat a bit too much sugar and that turned out to be a bad thing, so I try to be quite careful about eating sugar now as it's not very good for you.

Jack Slabbert: What did you enjoy most about rowing across the Atlantic:

Roz: I really loved it when I saw wildlife. I saw whales, sharks, squid, jellyfish, turtles, dolphins, a whale shark, flying fish and flying squid. I didn't know squid could fly! Apparently when they're scared? They just launched themselves out of the water so suddenly it was like a hail of squid.

Lucas Duff: What's your favourite place to visit when you go on holiday?

Roz: I don't really go on holiday. I had an amazing time travelling in Peru. I'll tell you where I'd like to go - I would love to go to the Himalayas.

Huge thanks to all involved in setting this up. Especially Isaac for looking after everyone so well during the visit and, of course, Roz Savage for her time and answering the questions so openly.
Editor

Big Dig

The results of last year's Big Athelstan Dig were on display in March at the Town Hall.

There was a wide range of artefacts on show, ranging from a plethora of pottery to medieval iron work and even a small Victorian doll. Probably the most fitting find, however, was a fragment from the rim of a cooking pot dating from the time of King Athelstan. No Roman finds were unearthed, possibly meaning that they either took everything with them when they left or were a lot tidier than the generations that succeeded them.



Photos: Richard Harris Photography



Eastgate House Dental Surgery

Family Focused, Friendly, Caring

Stefan Goodwin BDS MJDF MFGDP(UK) Dip Con Sed

General and Cosmetic Dentistry
IV Sedation
Hygienists
Implants - Simple and Complex
Orthodontics
Early morning/After School Appointments

Please contact our friendly team on: 01666 822168
or reception@eastgate-house.co.uk
www.eastgate-house.co.uk

Remembering a Remarkable Man

Whilst not strictly Malmesbury news, we were intrigued to hear from Martin Robins.

A stunning bronze statue of world-renowned aeronautical engineer Sir George Dowty standing next to his most famous design - the undercarriage of the Lancaster aircraft - was unveiled last year at Martin's farm in Lower Stanton St. Quintin. During the Second World War, and particularly during the 1948 Berlin Airlift, Lancaster aircraft were to be found at RAF Hullavington.

Sir George established his own company, Aircraft Components Co. in 1931 which later transformed into the Dowty Group, a company celebrated for its production of aircraft landing gear. During the Second World War, his company played a critical role by supplying landing gear for a vast majority of British aircraft. Following the war, Dowty's experience in hydraulics extended beyond aeronautics, influencing the design of motorcycle forks, industrial pumps and mining equipment. He was knighted in 1956 for his achievements.

Sir George was born a twin and there is a twin of this statue which, it is hoped, will be displayed in the Imperial War Museum.

For more information, please contact martinrobins@btinternet.com

O&J ELECTRICAL SERVICES



- Rewires
- Storage Heating
- Shower Installations
- Extra Sockets & Lights
- Electrical Maintenance
- Electrical Contracting
- Inspecting & Testing

All Electrical work undertaken

For a consultation or if you would like a quote please call: Office - 01666848182

Mobile - 07824885972

email: info@oandjelectrical.co.uk



The statue of Sir George Dowty outside Glebe Farm, Lower Stanton St. Quintin. Photograph kindly supplied by Martin Robins

Malmesbury and District Natural History Society

By Miranda Shirnia. Swift photo courtesy of Neil Parker:
[instagram.com/neilparkerphotography](https://www.instagram.com/neilparkerphotography)

Eyes to the Skies!

From late April you might begin to see our local Swifts start to arrive. Sweeping high above us and screeching their calls to each other, their time with us is incredibly short – by August they'll be gone again.

They come here to breed so their time with us is very precious. They return to exactly the spot they left last year remaining faithful to the same nesting site and generally to the same partner as well.

Knowing we have a breeding population in Malmesbury, we decided last year to carry out a survey to find out where they choose to nest.

The team, led by David Wall, was able to locate around 20 nests. Unlike Swallows, where a mud cup is stuck to the outside of a building, Swifts squeeze through tiny gaps in the roofs of buildings, especially old ones, so that their nests are not visible from the outside.

Nests were identified in properties in the following areas:

- 1 on Abbey Row
- 3, possibly 4, on Bristol Street
- 1, possibly 2, on Burnham Road
- 1 on Burnivale
- 1 on Foundry Road
- 2 on Gastons Road
- 2 on Horsefair
- 2 on King's Wall
- 2, possibly 3, on St. Johns Street
- 1, possibly 2, at Silk Mills
- 1, possibly 2 (at same property) on Silver Street
- 3 on West Street (one house probably with multiple occupation)

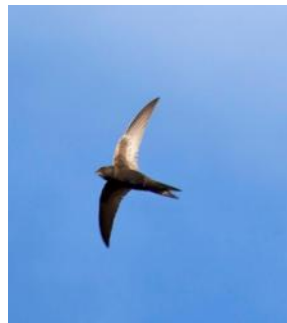
You may know of more – please let us know if that's the case! Once you've told us, you can also report your sighting to the RSPB's Swift Mapper page. See the map opposite for Malmesbury.

I'm surprised that there are barely any reports for Crudwell, as I saw a large number there last summer.

Although last year was a poor season in terms of weather, and hence insect availability which comprises their entire diet, we believe that breeding in general, in Malmesbury, was reasonably successful.

Clearly, we want to encourage more successful breeding this year and into the future, too.

When the Swifts return to their old nesting site, they may find that repairs have been carried out in their absence meaning they can't gain access anymore. Of course, it's understandable that householders may want to carry out repairs so, in these circumstances, we're keen for Swift boxes to be erected as an alternative. If they're in the same location, the hope is that the

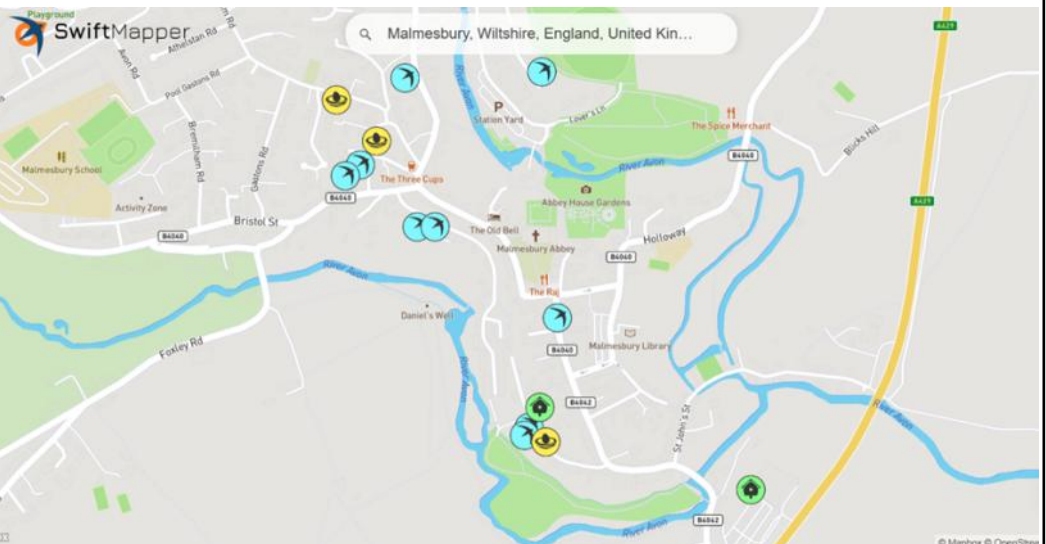


Swift boxes may be a solution to another issue as well. Last year's young will return to the same place that they fledged from and will want to establish their own nesting site nearby and a new Swift box will provide them with a convenient solution.

We've been installing some Swift boxes already on the walls of properties in areas where we know Swifts have bred in the past. We'd also like to work with churches as they tend to be ideal locations for Swifts, especially those located in the areas listed above.

For the future, we're looking at possibly using lures (recordings of Swift calls) to attract the birds to the Tower and the boxes we are erecting around town. We're also considering using cameras inside the boxes to see if the birds are breeding successfully. If you think you could help with this and the all-important task of climbing ladders and putting the boxes up, do contact us. The more people we have involved, the more Swifts we can help.

Find out more about this here: <https://www.futurehomes.org.uk/homes-for-nature>



Tech Talk: Managing Your Passwords

by Hugo Heriz-Smith

Whether logging into Facebook, Amazon, your bank, or an email account, managing passwords is one of the biggest technology challenges most people face. If you have an iPhone, iPad, or Mac, you'll be happy to learn that the way passwords are handled just got a whole lot easier. On all of these devices, there is now a new app, called Passwords. It dramatically simplifies the way your passwords are created, stored, and accessed.

Password management can be broken down to four primary components:

- Creating passwords
- Storing passwords
- Entering passwords when signing into an account.
- Managing security issues

The new Passwords app does all three of these very well, and more. When you open the app (its icon is three keys, coloured yellow, green, and blue), you will see six primary buttons:

All — An alphabetical list of your saved passwords. Click or tap on an entry to see the username and password for that account, when you last changed the password, and any notes you may have saved about this account. You will also see a warning if there's a security concern (I'll cover these warnings when I discuss the Security section).

Passkeys — A more secure way to log into apps and websites using digital keys rather than traditional passwords. Passkeys are stored securely on your phone or computer, protected by things like Face ID or Touch ID. This assures the website you're signing into that you are indeed you, without having to enter a password. Passkeys make it harder for scammers to hack your account.

Codes — Shows the accounts for which you have set up two-factor authentication. This provides the same functionality of apps like Microsoft Authenticator, except it is written directly into your iPhone and Mac.

Wi-Fi — Shows all of the WiFi networks you've previously logged into, and their associated passwords. This makes it easier to log into WiFi when you visit your favourite coffee shop, a friend's house, the airport, etc.

Security — Lists which of your accounts have been flagged for security issues. There are several reasons an account will show up here, such as when passwords are detected in a data leak,

easily guessed, or used by more than one account. All of these are reasons to change the passwords by simply clicking on the "Change Password..." button.

Deleted - To help avoid lost passwords, any password you delete will be kept here for 30 days before being deleted for good.

Understanding these features will hopefully help with your password management, but if it all seems a bit overwhelming, start by remembering these three tips:

1. Use the Password app instead of relying on a written record.
2. When asked, always let your device save your password.
3. When setting new passwords, always use the randomly generated strong passwords rather than ones you make up.

Good luck, and don't hesitate to contact me if you ever need help.

Hugo Heriz-Smith has been providing technical support and personal computing assistance to clients of all ages for more than 35 years. Visit his website at hugocanhelpt.com.

TREAT YOUR EYES

We are Malmesbury's only independent family run opticians. We pride ourselves on absolute professionalism combined with the latest in technology all within a very relaxed atmosphere. Our service to you and your eye care is second to none. Our google reviews say it all...


...go on, MAKE A SPECTACLE OF YOURSELF!

Personal service, competitive prices and no re-glaze fees

01666 822444

www.malmesburyopticians.co.uk

info@malmesburyopticians.co.uk



MALMESBURY OPTICIANS

Malmesbury Men's Shed? Where is it?

By John Fairbairn

A few years ago, I heard about an organisation called 'Men's Sheds'. I wondered if it was just a shed in the garden for men? In essence, I suppose that's what it is but, on doing some research, I realised that it's very much more. The Boss, my wife, describes it as 'The Women's Institute for Men'.



A quote from the UKMSA.org.uk (U.K. Men's Sheds Association) says that "*Men's Sheds (or Sheds) are similar to garden sheds – places to pursue practical interests at leisure, to practice skills and enjoy making and mending. The difference is that garden sheds and their activities are often solitary in nature while Men's Sheds are the opposite. They're about social connections and friendship building, sharing skills and knowledge, and, of course, a lot of laughter.*" They have also proved to be very beneficial to men with mental health problems and are a great help to those who are lonely. As the official blurb says "*we are not carers, but we care*".

There are a number of Men's Sheds that have women members, too. That's at the discretion of the particular Shed



So, I started to look around to find one. To my surprise, I found that Malmesbury doesn't have a Shed and that the nearest one was in Tetbury. So, along I went and joined. One of my main reasons for joining was that, after I hurt my back and had to take a medical early retirement 30 odd years ago, I started to teach myself wood turning and, although it has only ever been a hobby/passion, I dearly wanted to pass on some of what I have learned to others.

Why, oh, why isn't there a Shed in Malmesbury? It would benefit the town immensely and be good for so many people. I'd love the chance to pass on what I've learned and have found that there are lots of folks who would love to learn, too.

The difficulty seems to be finding a place for it. We'll really need a place of our own because the kit we'll need would be too big and heavy to be moved around much and too dangerous to be left unsecured for others who don't know how to use it. Either a ready-built workshop or a plot of land for us to put up a portable cabin would suffice. The location also needs to be easy to reach by public transport to accommodate those who don't drive. Electricity, water (for brewing coffee/tea) and a loo are also needed. This all makes it a bit complicated, but, if you know of any way that you can help, then a lot of men in Malmesbury and surrounding villages will be very happy and I think that our very own Shed will thrive. The Malmesbury ToolShed is active in Malmesbury and I believe that they too are looking for a permanent place. That would dovetail in with us a treat and we would be able to work well together.

So, if you can help, then please let me know. I can be contacted by email, jonzjob@aol.com or on 07925206114. I look forward to your replies and, hopefully, help. And if you would like to see some more of the things I would love to show others how to make, then please have a look at my hobby web site <https://johnnamandiers.wixsite.com/johns-w-o-w-1>

Malmesbury's Support for Ukraine Shows Our Community at Its Very Best

In February 2022 a small group gathered for a silent vigil in the Market Cross at the start of the Russian invasion of Ukraine. Most didn't know each other, but all were united in wanting to show solidarity with the people of Ukraine, writes Liz Cook.

Three years on, the eight who formed **Malmesbury Stands with Ukraine** support group have become firm friends. They continue to raise awareness and money to support the general hospital in Cherkasy, Ukraine, where one of the group comes from. They are proud that more than £20,000 has been raised locally to fund medical supplies and equipment to date.



Vigil by the Market Cross earlier this year Photo:

The relationship has become official. Last year our Town Mayor and the Mayor of Cherkasy signed a formal friendship agreement, both towns pledging to support each other and build connections. The group has also been recognised as a formal partner with Malmesbury & District Twinning Association.

Despite recent talks of a ceasefire, the awful, illegal invasion continues. Every day homes, livelihoods and lives of innocent people are being destroyed. The need for practical help and acts of solidarity are as important now as they were when Ukraine first hit the headlines.

"We will continue to stand with Ukraine - who must be allowed to decide their own future - until there is a proper and just peace for all Ukrainians throughout their country," said support group convenor Gavin Grant.

The group is asking the town to turn out and support its summer festival events:

Ivana Kupala - traditional midsummer festival night – Friday 27th June

Celebrating the Ukrainian summer solstice, **Ivana Kupala** has its roots in fertility and harvest.

Ukrainians make flower crowns and celebrate with music, dancing and food – it's a chilled evening in the stunning Cloister Gardens behind Malmesbury Abbey from 6pm to 9pm.

Entrance is free and a licensed bar and raffle will be available.

Bring your own picnic, blanket and flowers if you would like to make a flower crown.

No WOeMADness – relive the festival vibe! - Saturday 26th July

With WOMAD heading for pastures new, the group wanted to do something for Malmesbury to relive that festival vibe, on what would have been WOMAD weekend.

Introducing **No WoeMADness** – a one-night festival in Malmesbury Town Hall 7pm to 11pm. The brilliant line up includes energetic acoustic band Opa Rosa, local musician Theo May, Samba dancing and a disco.

Tickets are **£15 for the dance only** (festival food including samosas, pakoras, ice cream and cake on sale, plus bar) and **£35 for food tickets**: a delicious Thai supper, traditional Ukrainian cake, music and dancing

Tickets on sale on 1st May at the Town Hall or online here:

<https://www.eventbrite.co.uk/e/no-woemadness-festival-night-for-ukraine-tickets-1316423822089>

The next fundraising target is to raise £5,000 to buy and equip a second-hand ambulance and drive it to Cherkasy. If you would like to join the group - new members always welcome - send a message via the **Malmesbury for Ukraine** Facebook page.

Malmesbury CARNIVAL & Festival

News from Malmesbury Carnival 2025 HQ

The Times has declared Malmesbury as one of the best places to live in the UK, not least due to the fantastic range of culture, arts and events the Town offers to residents and visitors every year. A time honoured highlight of this Malmesbury calendar is the annual Carnival, 'by the community, for the community', and the Carnival



Committee are working hard on another full and exciting programme of events for 2025.

2024 Carnival was another outstanding success with over 20 events including music, talks, Open Gardens, Petticoat Lane and of course our famous, Procession. A generous £26,438

was raised and distributed in grants to 26 local charities and organisations.



New for 2025, we're planning a fabulous **Silent Disco night** in our stunning 12th Century Abbey and a fancy dress **Singalong Musical Cinema** in the Town Hall...both should be great fun, while we 'rest' Music in the Cloisters for 2025.

We are hoping as many clubs, pubs, shops, organisations, groups and individuals will take part in the **Procession on Saturday 30th August**.



Entry forms are here: malmesburycarnival.co.uk, along with entry forms for Petticoat Lane and the Scarecrow Trail. This year we're going all silver, and your pounds will be changed into 10p coins rather than 2ps and 1ps!

As in previous years the success of such a full programme is heavily dependent on our sponsors, event leaders and of course, our volunteers.

So do get involved and be part of Carnival 2025, email us at jointheteam@malmesburycarnival.co.uk

Quiz

1. Ann lives in the top flat. She is married. Directly below Ann lives Kim. We don't know if Kim is married or not. Directly below Kim lives Sue. Sue is not married. Can we say a married person lives directly above an unmarried person: yes, no, or, we don't have enough information?
2. How many wives of Henry VIII were executed?
3. At 93 million miles, name our nearest star?
4. What is the main gas in air?
5. In which season is the northern hemisphere closest to the sun?
6. Which of the following cricket grounds is not in England: Kensington Oval, Old Trafford, or Trent Bridge?
7. Is 12-midday AM or PM?
8. Who was the state of Virginia named after?
9. Which country in South America has the most northerly point?
10. If you bought a new kitchen for £32,000 and paid a deposit of £5000 on your credit card and the final balance with a bank transfer, how much would be protected under the section 75 credit card protection: None, £5000, or £32,000?

(
Answers at the bottom of the page)

Snippet

So much better than what was there before ...

Thanks to Eddie Briggs for bringing this mural under the bypass bridge to our attention.

Those of you who keep telling us that you've never seen a kingfisher might like to take a look at this. CAUTION: Real life kingfishers are smaller and may contain fish.



Answers to Quiz: (1) Yes (If Kim is not married Ann lives directly above her and if she is married, she lives directly above Sue), (2) Two (Anne Boleyn and Catherine Howard), (3) The Sun, (4) Nitrogen at 80% (5) Winter, (6) Kensington Oval (Barbados) (7) Neither (12-midday is technically 12-noon. AM means before noon and PM after noon) (8) Elizabeth I (who was known as the Virgin Queen), (9) Columbia, (10) None (section 75 only protects purchases between £100 and £30,000).

Local Independent Travel Agent

Why book with me?

100% Financial Protection
Access to 1000's of suppliers
One point of contact all the time
Personal & Caring Service
5 Star Reviews
24/7 Support
Latest technology with options to pay in instalments
UK Breaks to Bucket List trips
Experienced advice and guidance
No additional costs for you
You'd be supporting a small local business



HANNAH STANTON
Travel Counsellor
01666 540033
hannah.stanton@travelcounsellors.com
<https://www.instagram.com/bespoketravelwithhannah>



Solis Reflexology & Indian Head Massage

Malmesbury based Independent Reflexologist
& Indian head massage therapist.
Offering Home visits for Individuals, Residential
homes, Schools & Private events.

Please contact Ruth Pattinson: ruth@solisreflexology.co.uk
Or go to my website: www.solisreflexology.co.uk
Or message me on 07764583910



OFFER: 20% off your first treatment when you show this add.



JUST HEATING LTD

Oil, Gas and LPG Central Heating Specialists

- Boiler Servicing and Repairs
- Boiler and Oil Tank Replacements
- Radiator Installation
- Underfloor Heating
- Unvented Hot Water Cylinders
- Landlord Safety Certificates
- Powerflushing and Descaling
- Water Softener Installation



Friendly, Reliable and Expert Service

01666 390 309

Email info@justheatingltd.co.uk

Web www.justheatingltd.co.uk

Just Heating Ltd | School House, School Lane, Grittleton, Wiltshire SN14 6AR

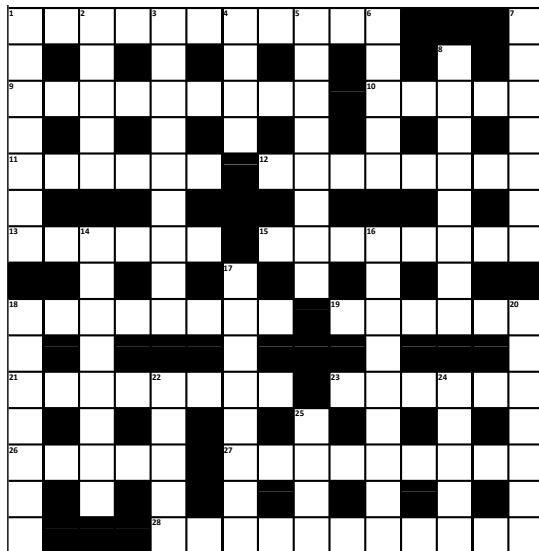
The Crossword

ACROSS

- 1...Prepare lift to make a semi-permeable barrier (6,5)
- 9...When back warn about river restored (9)
- 10...Tart hugging monarch becomes bitter (5)
- 11...Lists points about endless task (6)
- 12...Overwhelms southern dams (8)
- 13...Author penned a book including an old Liberal (6)
- 15...Hesitancy (not from Paris) creates an opening (8)
- 18...Audibly search for a darling mammal (4,4)
- 19...Cover a change including direction (6)
- 21...Bowel supplement? (8)
- 23...Stop for a break, we hear? (6)
- 26...Nothing happened until Eric involved a tradesperson (5)
- 27...Swiss hero ready to reveal? (4,5)
- 28...Desperate when you're here (3,2,6)

DOWN

- 1...The distant side of socialism (3,4)
- 2...Like our satellite? (5)
- 3...Surrounded after changes to deep novel (9)
- 4...Firstly, pass it to you. Shame! (4)
- 5...Without 'im, a barrier may become rocky (8)
- 6...Criticise Sunday lunch? (5)
- 7...Conservative plot in the Big Apple (7)
- 8...Above this it might look like 2. (4,4)
- 14...Go ahead and implore drunkenly to create waspish gall (3,5)
- 16...Beat in ire and make drunk (9)
- 17...Stopped! Sits about in the action (8)
- 18...Box Brown to the bare bones (7)
- 20...It spins whichever way you look at it (7)
- 22...Does senior become confused about his nationality? (5)
- 24...Age an old record by observing chromatic harmony, initially (5)
- 25...Mixed up young horse becomes a snowman (4)



Dave Newton
Fencing & Landscaping
Est 1988
Free Quotes
All Work Guaranteed
Fully Insured
Tel: 07518 452 132
E: davenewton68@outlook.com

